

2 One Lusty Glaze  
Lusty Glaze Road, Newquay

david ball  
| LUXURY COLLECTION |



**Guide Price £438,000 Leasehold**

## Key Features

- Luxury Coastal Apartment
- Modern Open Plan Living Space
- Fitted Kitchen with Stone Work Tops
- Underfloor heating throughout
- Large Private Paved Patio
- Lucrative Holiday Let Potential
- Allocated Parking Space
- Individual Lockable Surf Store
- Early Viewing Highly Recommended
- Sellers legal pack available



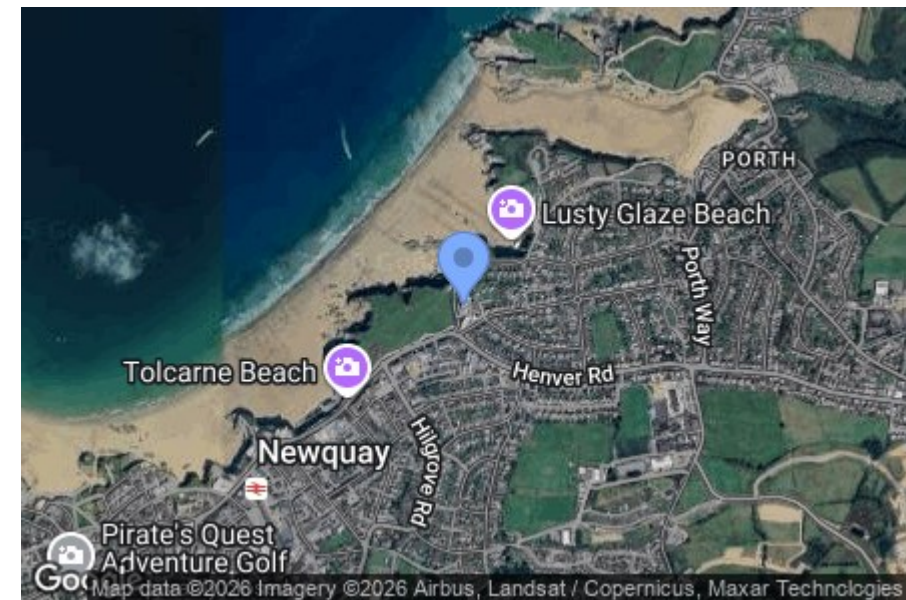
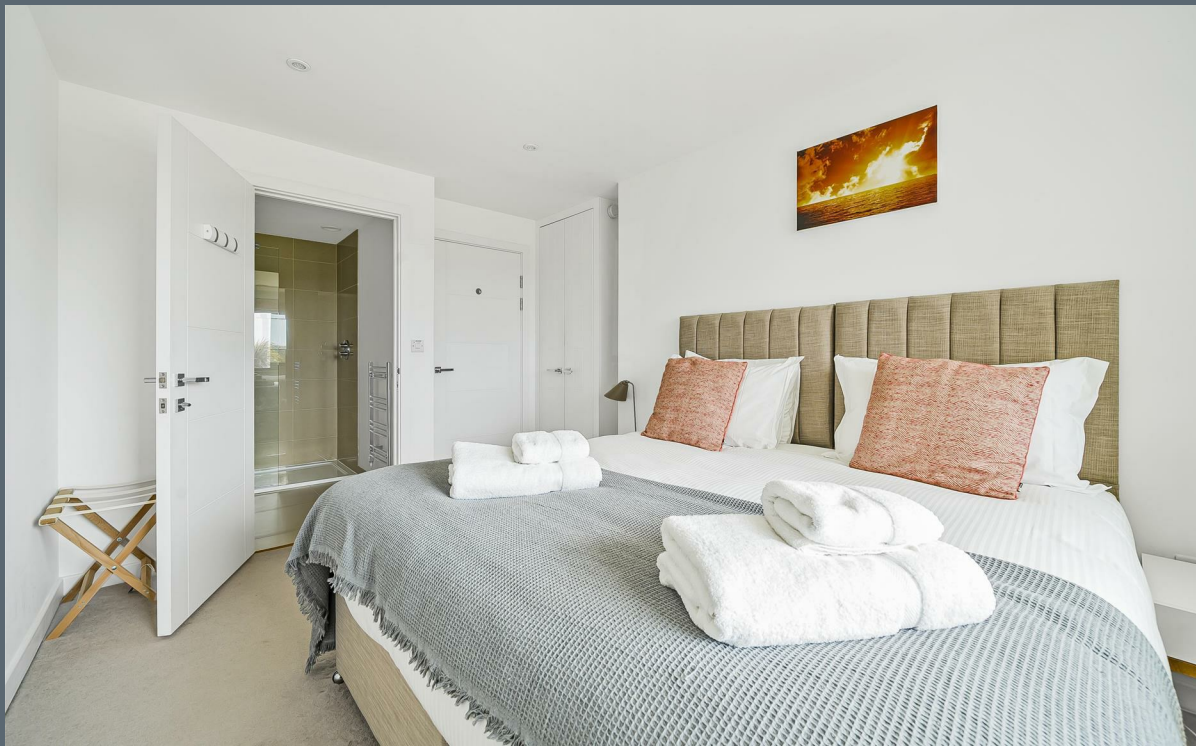
# The Property



## Externally



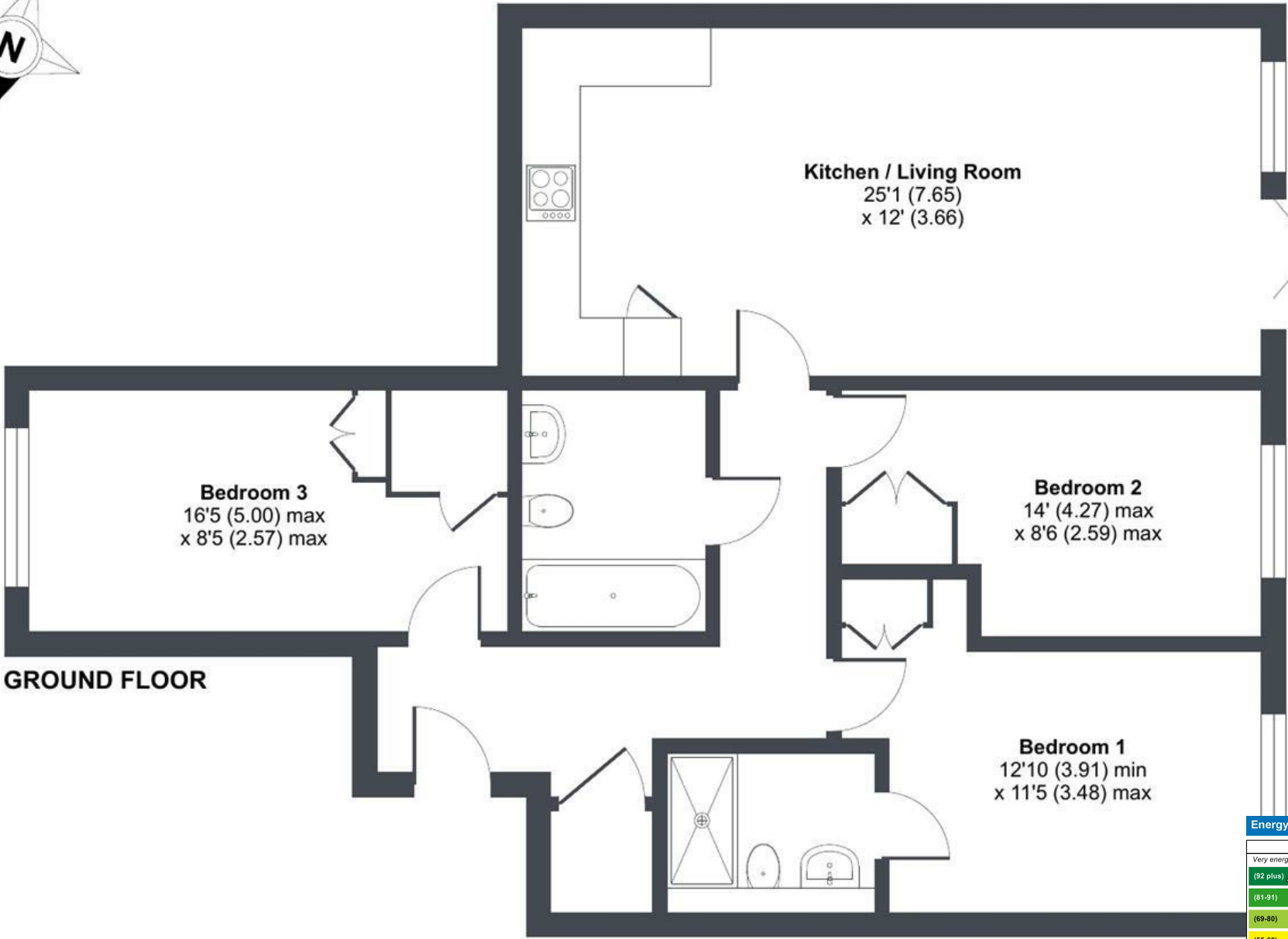
## The Location



Lusty Glaze Road, Newquay, TR7

Approximate Area = 939 sq ft / 87.2 sq m

For identification only - Not to scale



Energy Efficiency Rating		
	Current	Potential
Very energy efficient - lower running costs		
(92 plus) <b>A</b>		
(81-91) <b>B</b>	85	85
(69-80) <b>C</b>		
(55-68) <b>D</b>		
(39-54) <b>E</b>		
(21-38) <b>F</b>		
(1-20) <b>G</b>		
Not energy efficient - higher running costs		
England & Wales		
EU Directive 2002/91/EC		





david ball  
| LUXURY COLLECTION |

01637 850850  
www.davidball-luxury.co.uk



e.sales@dba.estate  
34 East Street, Newquay, Cornwall TR7 1BH

1. Particulars: these particulars are not an offer or contract nor part of one. You should not rely on statements by David Ball Agencies (DBA) in the particulars or by word of mouth or in writing as being factually accurate about the property, its condition or value. Neither DBA nor any joint agent has any authority to make any representation about the property or development and accordingly any information given is entirely without responsibility in the part of the agents, sellers or lessors. 2. Images paragraphs and other information; any computer generated images, plans, drawings, accommodation schedules, specifications details or other information provided about the property ("information") are indicative only. Any such information may change at any time and must not be relied upon as being factually accurate about the property. Any photographs are indicative of the quality and style of the development and location and do not represent the actual fitting and furnishing at this development. 3. Regulations; any reference to alterations to the property or use of any part of the development is not a statement that any necessary planning, building regulations or other consents has been obtained. These matter must be verified by an intending purchaser. 4. Fixtures and fittings; supplied services and appliances have not been tested by the vendors agent. Prospective purchasers are advised to make their own enquiries. 5. All dimensions are approximates.